



ANANTA ALUPVC BUILDING SYSTEMS

Registered Address: C-240, New Panchawati, Ghaziabad, UP- 201001.

Manufacturing Unit: 117A, Guldhar, Metro Pillar No. 644, Ghaziabad, UP- 201003.



+91 77097 64716, 70812 78618



anantaalupvcbs@gmail.com



www.anantaalupvc.com



Upvc & Aluminum Doors & Windows

A Complete Manufacturing Unit for Customize uPVC & Aluminium Sliding Doors & Windows

We provide The designed Windows & Doors as per customer requirement.

Available all type toughened Glasses as per Customer demand.



Sliding Doors & Windows For Balcony

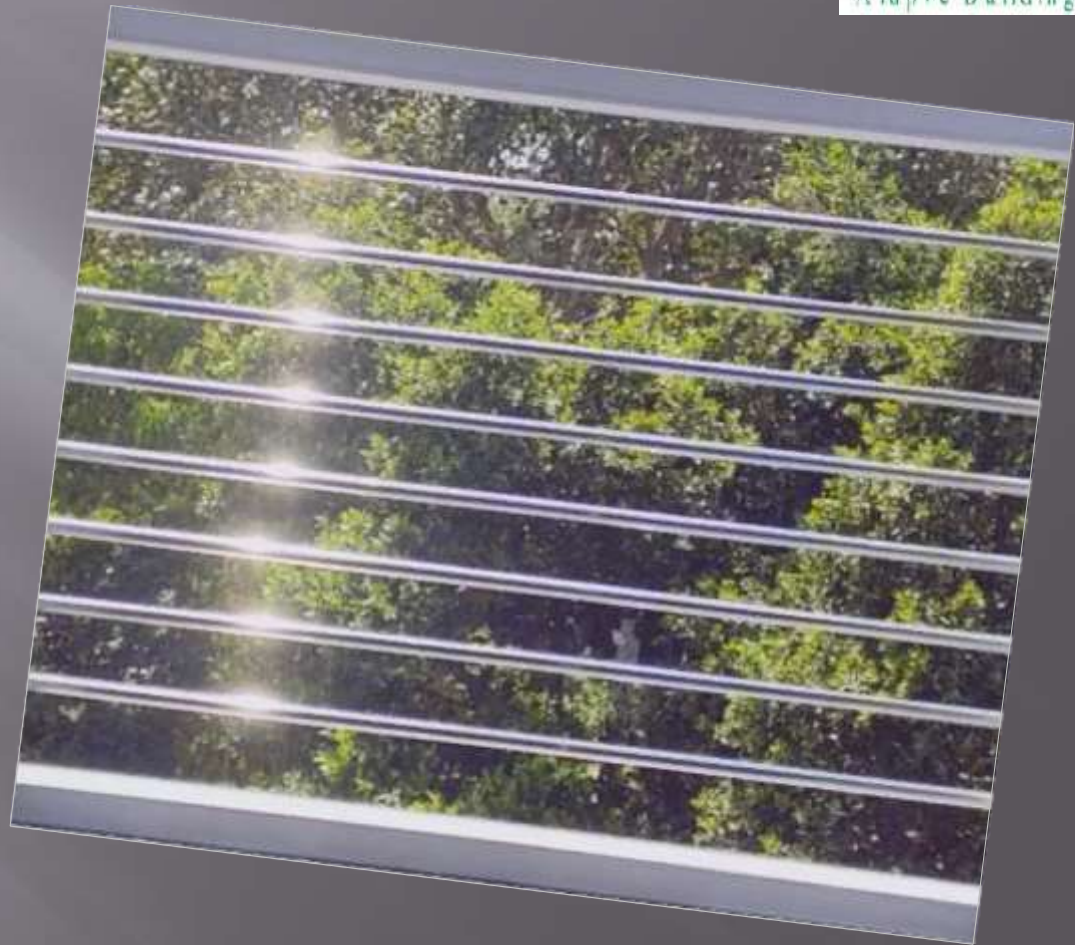


Designer Customized Windows



Security Windows for your Home

Our Vision we are always working with security for your home, so that we are always work how to secure with windows ad look like a good windows.



Casement Windows



Casement Doors & Windows



FRENCH DOORS



CASEMENT DESIGNED DOORS



SLIDE & FOLD FOR WIDE OPENING

Colour Slide Fold Doors



White Slide Fold Doors



CASEMENT SERIES

Single Leaf Windows



French Windows



SLIDING SERIES



Color sliding Window

White Sliding Doors



VERTICAL SLIDING WINDOWS

Vertical sliding Windows



Vertical sliding Windows



CENTER SLIDING DOORS & WINDOWS



Center Sliding Doors



Center Sliding Windows



Aluminium Windows



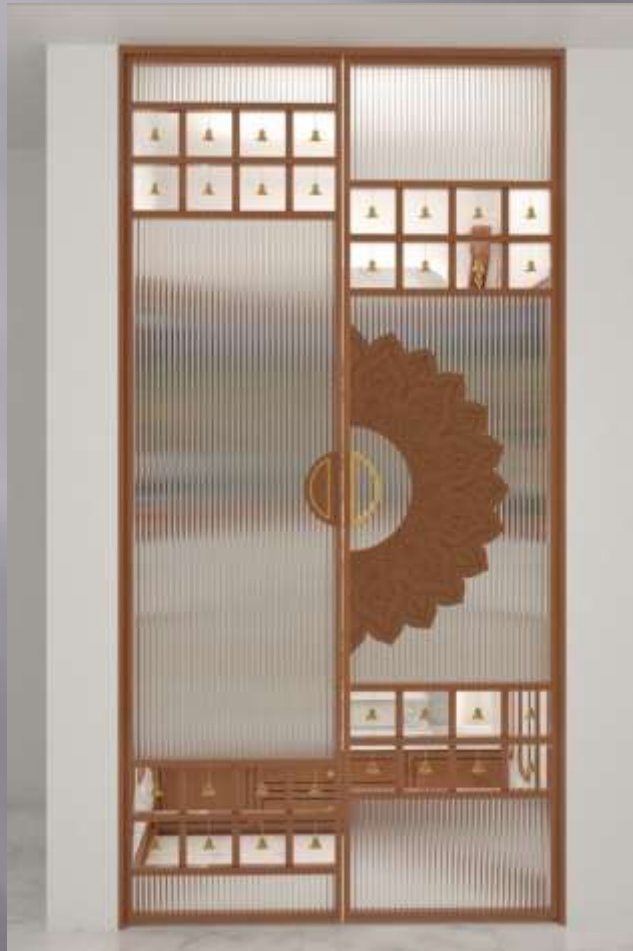
Aluminium Doors



Aluminium Slim Profile Patricians'



Aluminium Slim Doors



Projects



Available Color in uPVC

Dark Oak

Walnut

Golden Oak

Rustic Oak

Mahogany

Anthracite Grey

Black Smooth

Flemish Gold

Strong & Secure

Ananta Door & Window systems have been engineered to allow the secure fitting of hinges, locking devices and handles providing a high level of security against intrusion and

Ananta systems are naturally flame retardant and decrease the re load of a building fire.

Wind Load

ANANTA uPVC Door & Windows can with stand storms with wind pressure of over 3000 Pascal which is equivalent to a speed of 245 km/hr. This provides excellent application flexibility for today's modern high rise building structure.

Sensibly Green

ANANTA doors and windows are a superior option to wood and aluminium. Positive insulation reduces the carbon footprint of the building. 100% recyclable ANANTA systems are Lead free, thus increasing the environmental sustainability.

UV Resistant

ANANTA doors and windows systems are capable of protecting from high UV index. Entire process from raw material selection to advanced extruding to further processing is formulated to attain highest quality profiles capable to resist UV radiations which are generally high in Indian subcontinent.

Weather Resistant

Built with engineering precision, ANANTA product range when installed in accordance with known installation guidelines like BS8213-4 will provide the perfect barrier against the elements. Rotting, splitting, warping or corroding, some of the problems associated with other frame materials will not happen with uPVC.

Energy Efficient

When it comes to thermal properties, uPVC is an excellent proposition for fenestration solutions due to its inherent warmth. All ANANTAs systems provide excellent thermal insulation, and the TwinSash can achieve as low as 0.8 W/m²K by using double glazed units. This makes the TwinSash from ANANTA a truly energy efficient, comfortable and affordable fenestration solution for all markets.

Sound Insulation

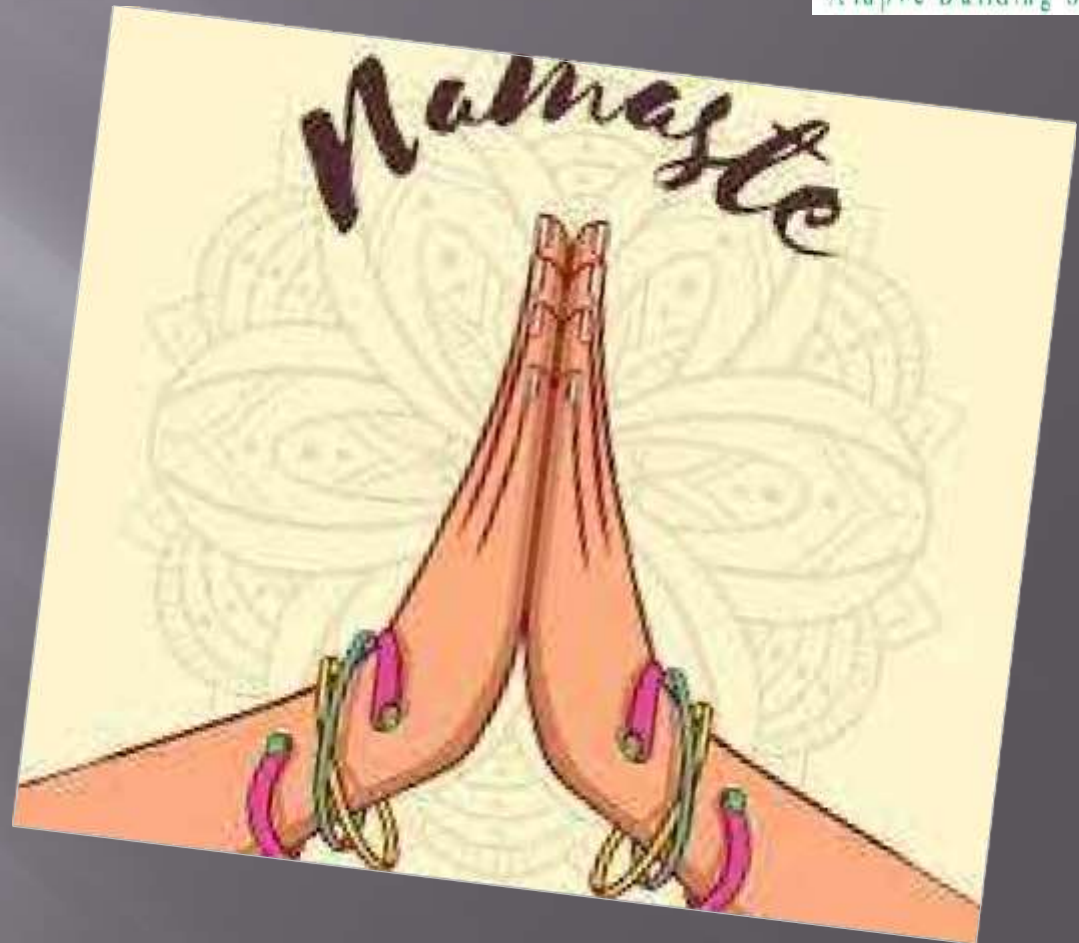
ANANTA uPVC Door & window systems utilize a multi-chambered profile design with double seal technology that ensures excellent insulation against sound infiltration. Installed with appropriate glazing, sound reductions up to 40 dB (decibels) are achievable.

Self Extinguishing

uPVC is difficult to ignite, if ignited and the source of flame is taken away, uPVC self extinguishes. uPVC

will not support combustion and will not spread the fire on its own. uPVC has one of the lowest surface spread of flame ratings of all materials.

ANANTA ALUPVC BUILDING SYSTEMS



Registered address:

C-240, New Panchwati,
Ghaziabad UP-201001.

Production UNIT:

*117-A, Guldhar, Metro Pillar
No. 644, Meerut Road,
Ghaziabad, UP-201003

Profile Brands



Our Clients

